



Windows | Doors | Hardware

SAHR

VOL. 2, ISSUE 7

JULY 2018

we're growing...

now open in Muskegon

We are proud to announce our newest location at 2068 E. Sherman in Muskegon! Our continued growth is attributed to the increasing demand for our products, services and expertise. This marks our 4th location with the others in Lansing and Grand Rapids with the headquarters in Kalamazoo. SAHR started in 1977 with just 3 employees and thanks to our customers has enjoyed great success and has grown to over 40 team members. Thank you for your continued business and support!

The Exchange Building

There is a big change happening to the downtown Kalamazoo skyline and we are proud to be a part of this large scale project.

The Exchange is a brand new, 15-story, 335,000-square foot mixed use building in the heart of Downtown Kalamazoo. It is located at 151 W. Michigan Ave, the southeast corner of W. Michigan and Rose. The building will offer nearly 60,000 square feet of commercial space, 300 internal parking spots, and 133 luxury apartments.



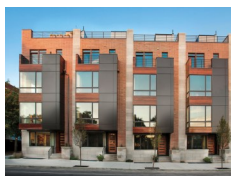
If you have an upcoming project, large or small, contact us!



MARVIN
Windows and Doors

Commercial Windows

When it comes to commercial windows, Marvin has an advantage! Using the Integrity Wood Ultrex window, the developer of this Hilton Garden Inn were able to take advantage of it's virtually indestructible patented fiberglass exterior. Talk to one of our window experts today regarding your options!



SAHR BUILDING SUPPLY IS YOUR TRUSTED SOURCE FOR ALL COMMERCIAL PROJECTS. HOLLOW METAL DOORS, FRAMES & HARDWARE ARE JUST THE BEGINNING OF WHAT WE CAN OFFER. CONTACT ONE OF OUR LOCATIONS FOR MORE INFORMATION!



COMMERCIAL & RESIDENTIAL

www.TeamSAHR.com

KALAMAZOO	GRAND RAPIDS	LANSING	MUSKEGON
3074 Interstate Parkway Kalamazoo, MI 49048 Ph: 269.344.6133 Fax: 269.344.2782	475 36th Street SE Grand Rapids, MI 49548 Ph: 616.288.2001 Fax: 616.608.3931	4600 N. Grand River Avenue Lansing, MI 48906 Ph: 517.323.9488 Fax: 517.323.9454	2068 E. Sherman Muskegon, MI 49444 Ph: 231-580-9288 Fax: 616-608-3931

1.855.724.7934



[Unsubscribe](#)